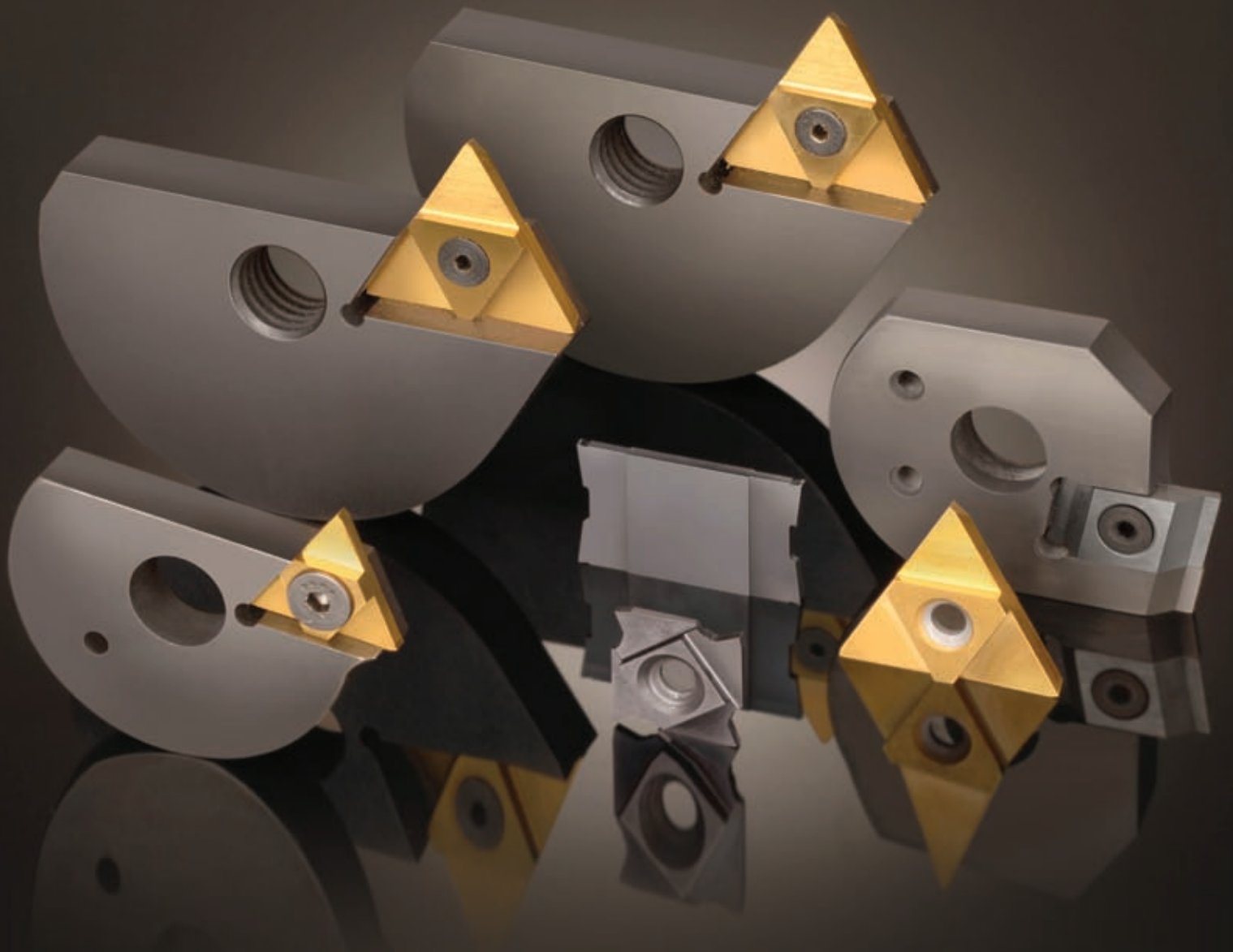




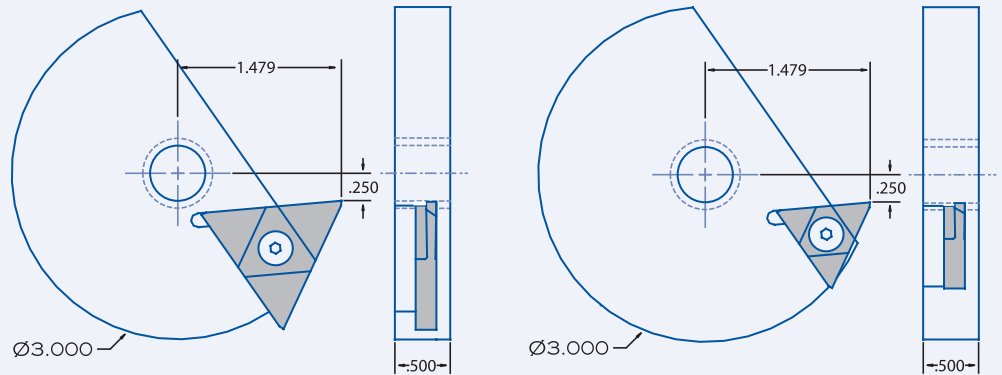
**Posa-Cut Corporation**



**BROWN & SHARPE • DAVENPORT  
CUT OFF TOOLING**

- Variety of Inserts In Stock
  - 10% Micrograin PVD TiN Coated
- Holders In Stock
- Ground Chip Breakers
- Multiple Cutting Edges
- Insert Locates on I.C.
  - Unused edges are usable if an edge chips or breaks.
- Special Grades and Coatings Available
- Special Designs Available
- Cut Off Tooling Available for other Machines
  - Tornos
  - CNC
  - ACME
  - New Britain
- Full Service Engineering Department
- Expedited Delivery Available

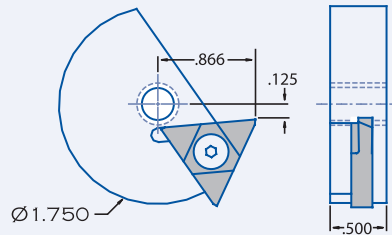
## Brown & Sharpe #2



**COH-#2BS-.750**  
.750 I.C. Insert (.475 Depth of Cut)  
COI-.750-RH15-.093 Insert Shown

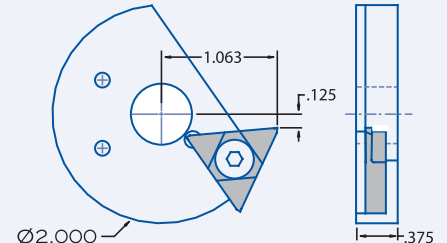
**COH-#2BS-.500**  
.500 I.C. Insert (.280 Depth of Cut)  
COI-.500-RH15-.093 Insert Shown

## Brown & Sharpe #00

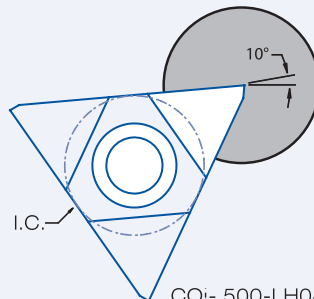
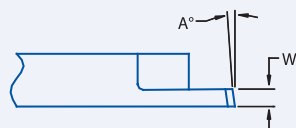


**COH-#00BS**  
.500 I.C. Insert (.280 Depth of Cut)  
COI-.500-RH15-.125 Insert Shown

## Davenport



**COH-DAV**  
.500 I.C. Insert (.280 Depth of Cut)  
COI-.500-LH08-.062 Insert Shown



COI-.500-LH08-.062 insert Shown

## Inserts

Depth of Cut:

.500 I.C. Insert .280

.750 I.C. Insert .475

Numbering Convention:

COI-(Insert 'I.C.')(Hand)(Lead Angle -'A°')(Cut Off Width-'W')

.500	LH	0	.062
.750	RH	08	.093
		15	.125